



KTC

LINEAR POSITION SENSORS

Standard 75-1250mm

www.minor-tech.com

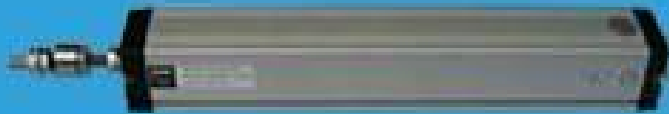
Tel:+86(0)75527058268

Fax:+86(0)75527058238

Mail:li@minor-tech.com

MSN:li@minor-tech.com

KTC Pull Pole series

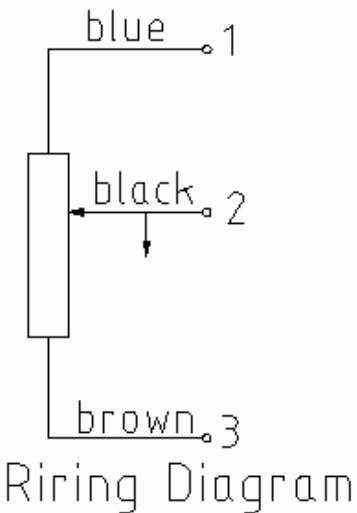


Features of KTC series:

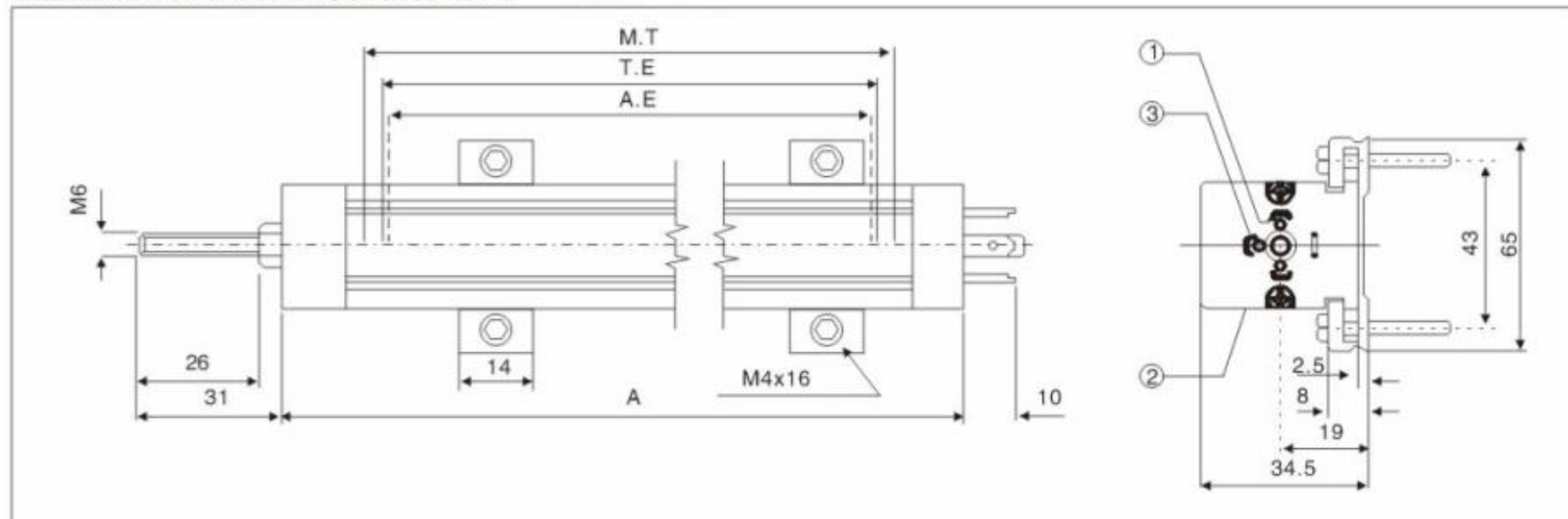
- A、 Super service life (100×10^6 cycles)
- B、 Linearity 0.05% (Model ≥ 350 mm)
- C、 Repeatability < 0.01 mm
- D、 Operating speed ≤ 10 m/s
- E、 Ingress protection IP60
- F、 DIN 430650 connector

KTC Pull Pole series linear position sensors are designed for precise measurement of displacement and length . The Measuring range of KTC is up to 1250mm with repeatability of ± 0.01 mm and linearity of 0.05% (model > 350 mm).The structure is designed for installing simply but reliably .Anodized aluminium housing to ensure beautiful appearance and super corrosion resistance. Because of conductive plastic track inside ,the product could run glidingly and have low noise output.

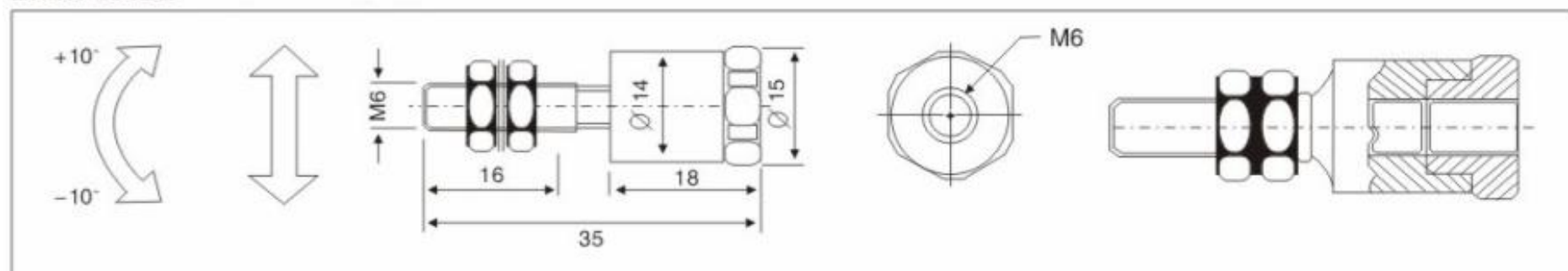
There is a ball coupling at the top of pull pole to reduce the effects of misalignment with the acutating part.Own to the technology of trimming resistance , what MINOR could privede you is not only required linearity,but also any resistance such as 5678Ω or 8765Ω just as you need .



MECHANICAL DIMENSIONS KTC



LINK BALL



Technical specification of KTC

Model	Unit	75	100	125	150	175	200	225	250	275	300	325	350	375	400	425	
Measuring range	mm	517	100	125	150	175	200	225	250	275	300	325	350	375	400	425	
Total electrical travel(T.E)	mm	522	105	130	155	180	205	230	255	280	305	330	355	380	405	430	
Resistance	KΩ	5	5	5	5	5	5	5	5	5	5	5	5	5	5	5	
Resistance tolerance	±%	20															
linearity	%	0.1	0.1	0.09	0.08	0.08	0.08	0.08	0.07	0.07	0.06	0.06	0.05	0.05	0.05	0.05	
Repeatability	mm	0.01															
Recommended current(wiper)	μA	1															
Max current(wiper)	mA	10															
Max voltage	V	42															
Output range		0-5V, 0-10V, 4-20mA															
Resolution		infinite															
Output smoothness	%	0.1															
Insulation resistance	MΩ	≥10															
Temperature Coefficient	ppm/k	5															
Dimensions A	mm	142	167	192	217	242	267	292	317	342	367	392	417	442	467	492	
Mechanical travel(M.T) B	mm	82	107	132	157	182	207	232	257	282	307	332	357	382	407	432	
Operating force	N	≤3															
Operating temperature	℃	-60 150															
Vibration frequency range	Hz	5 2000															
Amplitude	mm	0.8															
Acceleration	g	20															
Service life	cycle	100×10 ⁶															
Operating speed	m/s	≤10															
Model	Unit	450	475	500	550	600	650	700	750	800	850	900	950	1000	1150	1250	
Measuring range	mm	450	475	500	550	600	650	700	750	800	850	900	950	1000	1150	1250	
Total electrical travel(T.E)	mm	455	480	505	555	605	655	705	755	805	855	930	955	1005	1155	1255	
Resistance	KΩ	5	5	5	5	10	10	10	10	10	10	10	10	10	10	10	
Resistance tolerance	±%	20															
linearity	%	0.05	0.05	0.05	0.05	0.05	0.05	0.04	0.04	0.04	0.04	0.04	0.04	0.04	0.04	0.03	0.03
Repeatability	mm	0.01															
Recommended current(wiper)	μA	1															
Max current(wiper)	mA	10															
Max voltage	V	42															
Output range		0-5V, 0-10V, 4-20mA															
Resolution		infinite															
Output smoothness	%	0.1															
Insulation resistance	MΩ	≥10															
Temperature Coefficient	ppm/k	5															
Dimensions A	mm	517	542	567	617	667	717	767	817	867	917	967	1017	1067	1217	1317	
Mechanical travel(M.T) B	mm	82	482	507	557	607	657	707	757	807	857	907	957	1007	1157	1257	
Operating force	N	≤3															
Operating temperature	℃	-60 150															
Vibration frequency range	Hz	5 2000															
Amplitude	mm	0.8															
Acceleration	g	20															
Service life	cycle	100×10 ⁶															
Operating speed	m/s	≤10															