

MINUO 米諾 KDC-18 鉸鏈系列



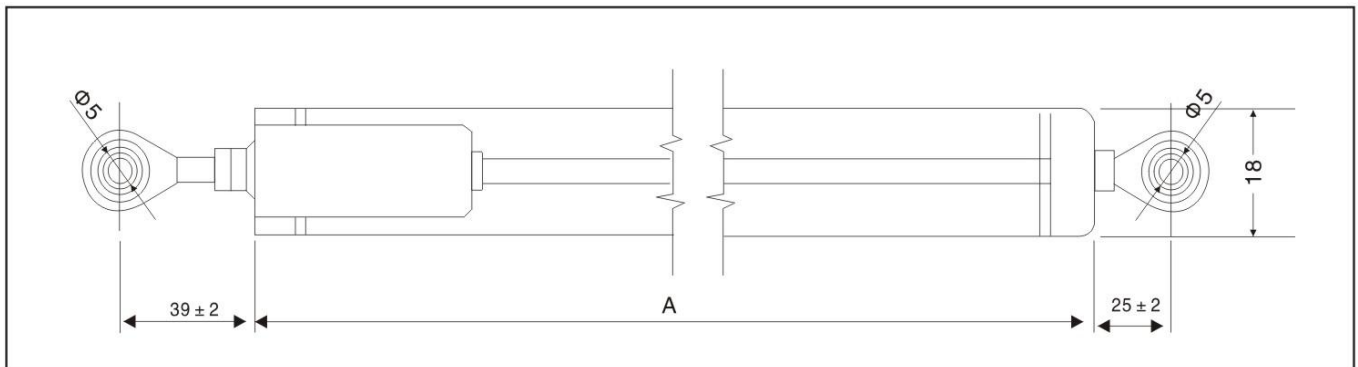
外置模塊，關節軸承，量程：
0~400mm，可選模擬輸出：0~5V，
0~10V，4~20mA，兩端帶鉸鏈接
安裝方式，適用於較大機械行程且
有擺動的位置檢測，對安裝的對中
性無任何要求。例如：機器人，
磚機，陶瓷機械，水閘控制等。

External connected signal processing,
joint bearings. Stroke range: 0~400mm,
analog output: 0~5V, 0~10V, 4~20mA.
Both ends With ball coupling installation.
Apply to large mechanical travel and
swing position detection, without any
requirement on the installation of the
neutral. Such as robot, brick machine,
ceramic machine, sluice controlling etc

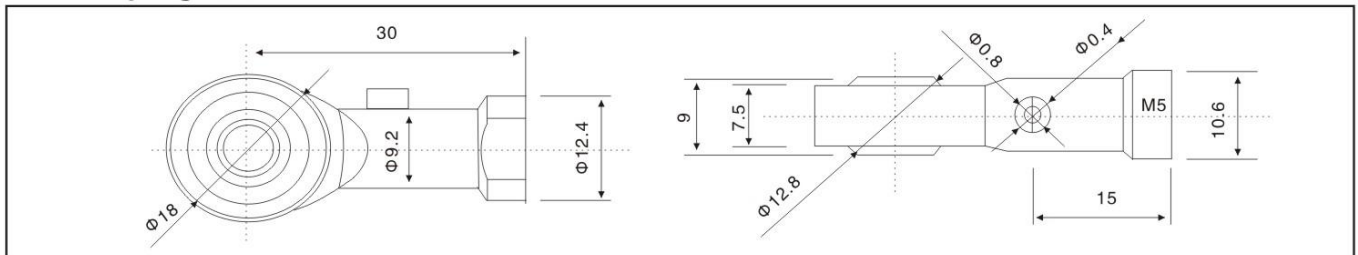
KDC-18 Series 鉸鏈系列		10	25	50	75	100	125	150	175	200	225	250	275	300	400	
Total Electrical Travel(T.E)電性總行程	mm	11	26	51	76	101	126	151	176	201	226	251	276	301	401	
Active Electrical Travel(A.E)可用電性行程	mm	10	25	50	75	100	125	150	175	200	225	250	275	300	400	
Resistance 電阻 ±20%	kΩ	1			5.0											
Independent Linearity 獨立綫性率	±%	0.05														
Mechanical Travel 機械行程(M.T)	mm	11	26	51	76	101	126	151	176	201	226	251	275	301	401	
Output range 輸出範圍		分压器 Voltage divider														
Resolution 解像度		infinite 無限														
Temperature Range 使用溫度範圍	°C	-50+120														
Dimensions 尺寸A	mm	53	68	93	118	143	168	193	218	243	268	293	318	343	443	

尺寸僅供參考，如有更改，恕不另行通知
Dimensions for reference only, subject to change without notice

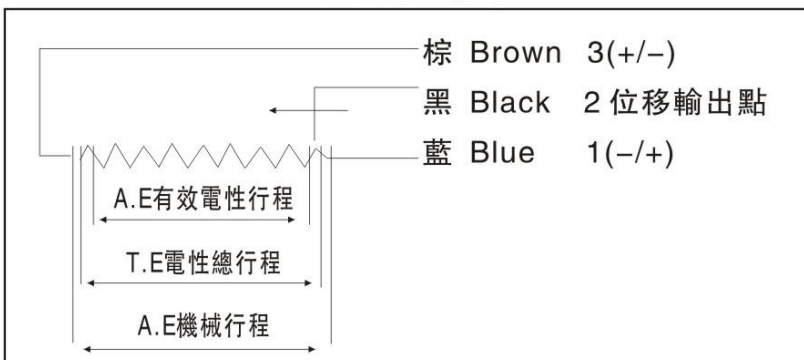
Mechanical Dimension KDC-18 尺寸 KDC-18 鉸鏈式



Ball Coupling 球鉸



電器安裝圖



Recommended Measurement Circuit 用測試綫路

